

For more colour in
Passive houses



KBE proStratoTec





U_f bis
0.79
W/(m²K)

KBE proStratoTec

The fibreglass-reinforced plastic which removes the need for steel

Steel reinforcements have always played an important part in the production of PVC windows. The new proStratoTec technology replaces steel with fibreglass-reinforced plastic, thereby making it redundant. Using an innovative tri-extrusion process, PVC virgin material, regrind and fibreglass-reinforced plastic are extruded at the same time to form a single window profile.

The benefit for you: Thanks to the superior thermal insulation, passive house windows in accordance with the Dr Feist Passive House Institute are now a reality. Sashes equipped with proStratoTec are available in the KBE 88 double and centre seal systems.



» Passive house windows now available in colour

Passive house certification in accordance with the Dr Feist Passive House Institute

» Weight reduction

Weighs approx. 25% less compared to sashes with steel

» Thermal insulation value U_f = 0.79 W/(m²K)

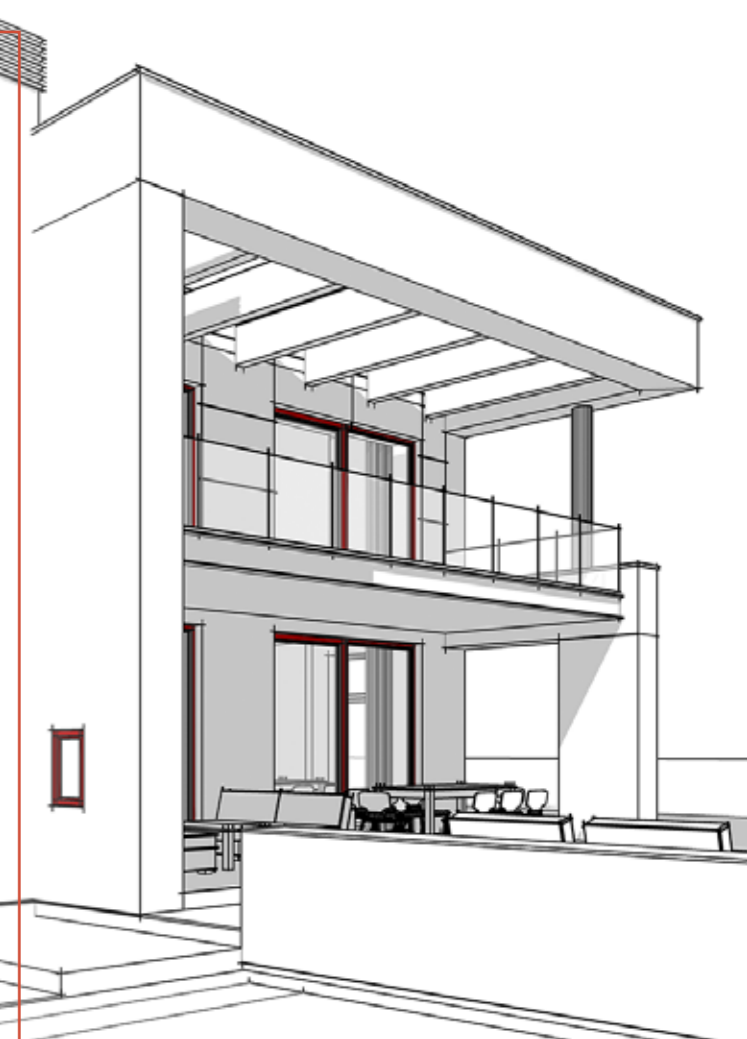
Improved insulating value as no steel is used

» Standardised manufacture

No additional steps required

» Sustainability

Intelligent recycling process. All of the materials are reused





profine GmbH
KBE Fenstersysteme
Motzener Straße 31–33
12277 Berlin
Telefon: +49 30 86873-0
Telefax: +49 30 86873-386
E-Mail: info@kbe.de
www.kbe.de